

# Rack Combo B

Oregon Crusaders Independent Percussion Ensemble 2008-2009

## Aftershock

Based on the Original "Turbine" by John Mackey

Arranged by Mike Stevens  
and Jeff Bush 2008-2009

$\text{♩} = 184$

8

*ff*

12

A

17

B

7

C

6

D

32

4

38

E

8

F

8

55

G

7

H

4

67

I

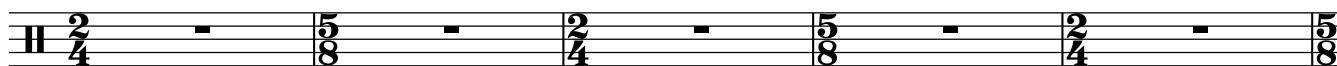
4

J

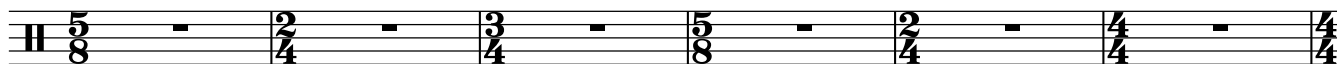
76

83

89

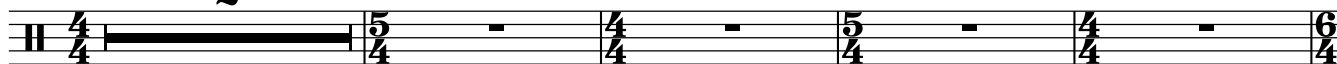
94 **K**100 **L**

107

**M**

113

2

**N**119 **O**

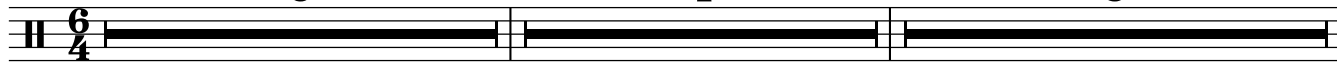
6

**P**

4

**Q**

8

137 **R**

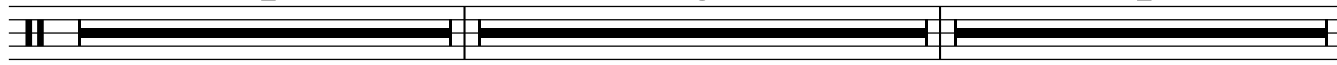
4

**S**

8

**T**

4

153 **U**

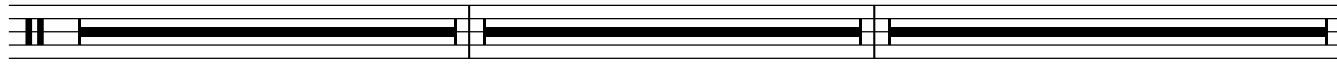
4

**V**

4

**W**

7

168 **X**

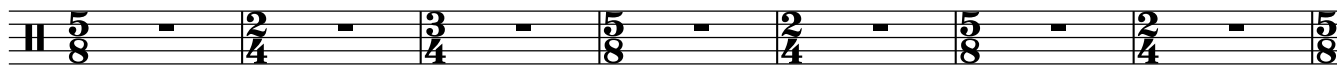
4

**Y**

5

**Z**

181

**AA**

188

**BB**

A single musical staff for a drum set. The time signature changes from 5/8 to 2/4, then 3/4, 5/8, 2/4, 3/4, and finally 4/4. The staff contains a series of rests corresponding to these time signatures.

194 **CC**

A single musical staff for a drum set. The time signature changes from 4/4 to 3/4, then 4/4, 3/4, 4/4, and finally 6/4. The staff contains a series of rests corresponding to these time signatures.

199 **DD**

**EE**

A single musical staff for a drum set. The time signature changes from 6/4 to 5/4, then 12/4, and finally 5/4. The staff contains a series of rests corresponding to these time signatures. The number '5' is written above the first measure and '12' above the second measure.

216 **FF**

A single musical staff for a drum set. The time signature changes from 5/4 to 4/4, then 5/4, and finally 4/4. The staff contains a series of notes marked with 'x' and a '7' indicating a triplet. The dynamic marking *ff* is written below the staff.

22 **GG**

A single musical staff for a drum set. The staff contains a series of rests. The dynamic marking *ff* is written below the staff.